

MEMO & ULYS MODULAR METERS

... For implementing your metering plan

MEMO RANGE

		Single-phase	Three-phase		
		MEMO MD32	MEMO MD65	MEMO TD80	
Model	Model				
	Rating	32 A	65 A	80 A	
	MID Certification	no	no	no	
	Accuracy class	IEC Class 1	IEC Class 1	IEC Class 1	
Installation	Format	DIN modules	1	2	4
	Power supply	Self-powered			
	Rated voltage	230 Vac	230 Vac	230/400 Vac	
	Inputs	Direct/Sensors	Direct 32 A	Direct 65 A	Direct 80 A
Energy metering and management	Display and communication (if available)	Total kWh	Total and partial kWh	Total and partial kWh	
Multi-measurement	Display and communication (if available)	-	-	-	
Recordings / Push FTP					
Inputs / Outputs	Pulse output(s)	1	1	1	
	Tariff change input	-	-	-	
Communication	RS485 Modbus	-	-	-	
	Ethernet Modbus	-	-	-	

To order

MEMO MD32 P01330740	MEMO MD65 P01330741	MEMO TD80 P01330745
---------------------	---------------------	---------------------

ULYS RANGE

		Single-phase	Three-phase		Multi-feeder			
		ULYS MD45-M	ULYS MD100-M	ULYS TDA80-M ULYS TD80-M	ULYS TTA-M ULYS TT-M	ULYS FLEX Modbus	ULYS MCM	
Model	Model							
	Rating	45 A	100 A	80 A	Sur TC 1/5 A	0,3 to 20000 A	Jusqu' to 3000A	
	MID Certification	yes	yes	yes	yes	no	no	
	Accuracy class	MID Class B				IEC Class 1	IEC Class 0.5	
Installation	Format	1	2	4	4	4	8 (156x90x61)	
	Power supply	Self-powered					85-265 Vac	100-240 Vac
	Rated voltage	230 Vac	230 Vac	230/400 Vac	230/400 Vac	10/17 to 285/495 Vac	25 to 400 Vac (P-P)	
	Inputs	Direct 45 A	Direct 100 A	Direct 80 A	Isolated 1/5 A	On Rogowski coils	x9 or x18 feeders on CT or on Rogowski loops	
Energy metering and management	Bidirectional, kWh, total kVAh and partial kWh	Bidirectional, kWh, total kVAh and partial kWh	Bidirectional, kWh, kVAh, total, partial and per phase	Bidirectional, kWh, kVAh, total, partial and per phase	Bidirectional, kWh, kVAh, total, partial and per phase	kWhh, kVAh, kVAh per feeder		
Multi-measurement	V, I, P, Q, S, E, PF	V, I, P, Q, S, E, PF	V, U, I, P, Q, S, E, PF, ΣP, ΣQ, ΣS	V, U, I, P, Q, S, E, PF, ΣP, ΣQ, ΣS	V, U, I, P, Q, S, E, PF, ΣP, ΣQ, ΣS	V, U, I, P, Q, S, E, PF, ΣP, ΣQ, ΣS per feeder		
Recordings / Push FTP					Ethernet model	-	-	
Inputs / Outputs	Pulse output(s)	1	2	2 on TDA80-M - 1 on TD80-M	2 on TTA-M - 1 on TT-M	1 (alarm or pulse)	1	
	Tariff change input	ULYS MD45-M	ULYS MD100-M	1 (except Ethernet model)	1 (except Ethernet model)	no	no	
Communication	RS485 Modbus	ULYS MD45-M Modbus	ULYS MD100-M Modbus	ULYS TD80-M Modbus	ULYS TT-M Modbus	ULYS-FLEX Modbus	On all models	
	Ethernet Modbus	-	-	ULYS TD80-M Ethernet	ULYS TT-M Ethernet	-		

ULYS MD45-M P01330754	ULYS MD100-M P01330760	ULYS TDA80-M P01331018	ULYS TTA-M P01331019	ULYSFLEX Modbus Kit 30/3 P01331046	ULYS MCM 9 P01331062
ULYS MD45-M Modbus P01330756	ULYS MD100-M Modbus P01330761	ULYS TD80-M Modbus P01331036	ULYS TT-M Modbus P01331037	ULYSFLEX Modbus Kit 70/3 P01331047	ULYS MCM 18 P01331064
		ULYS TD80-M Ethernet P01331040	ULYS TT-M Ethernet P01331041	ULYSFLEX Modbus Kit 30/10 P01331048	For accessories (CTs, cables, screens), please contact us
				ULYSFLEX Modbus Kit 70/10 P01331049	

More than just an energy meter



ULYS TD80 / TT Ethernet

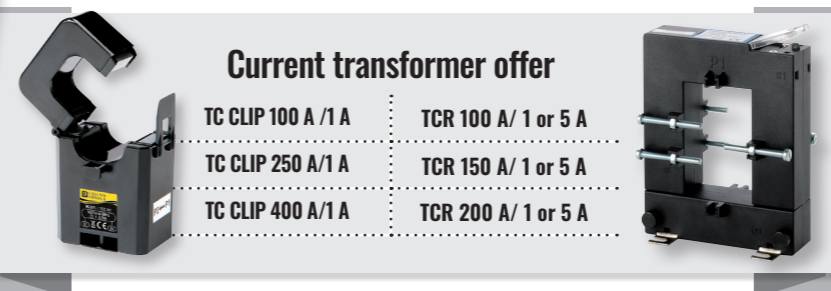
The simple, stand-alone solution for recording all the electrical activity on a feeder:

- Processing via integrated web pages
- Synchronized recordings of the electrical quantities
- Data transmission on ftp server

Quickly identify the MID meters marked "M"



To complete your ULYS TT models



Current transformer offer

- | | |
|---------------------|----------------------|
| TC CLIP 100 A / 1 A | TCR 100 A / 1 or 5 A |
| TC CLIP 250 A / 1 A | TCR 150 A / 1 or 5 A |
| TC CLIP 400 A / 1 A | TCR 200 A / 1 or 5 A |

Strengths of ULYS MCM

- Compact**
18 meters in one
- Small size**
Thanks to its innovative design
- Compatible**
With a large number of sensors
- Quick**
to set up

MEMO & ULYS MODULAR METERS

... For implementing your metering plan

MEMO RANGE

METERING ESSENTIALS

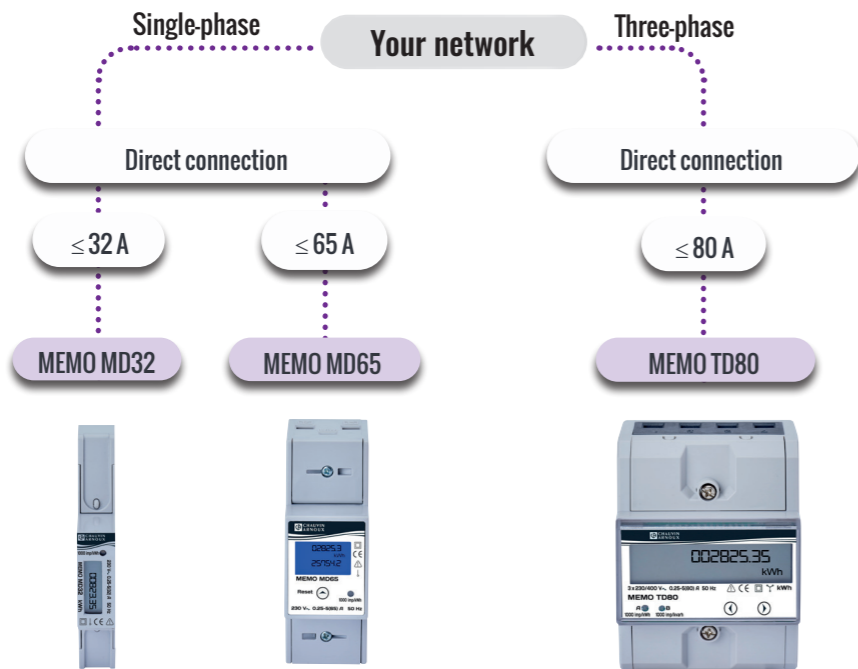
- Optimized inventory**
A limited number of references suitable for the most common electrical feeders
- Clear, simple display**
Direct access to your consumption data
- No prior parameter settings**
Operational as soon as it is powered up

IEC 62053-21

Monitoring and allocation of consumption

MID EN50470-3

Electrical energy rebilling on private network



IEC

IEC

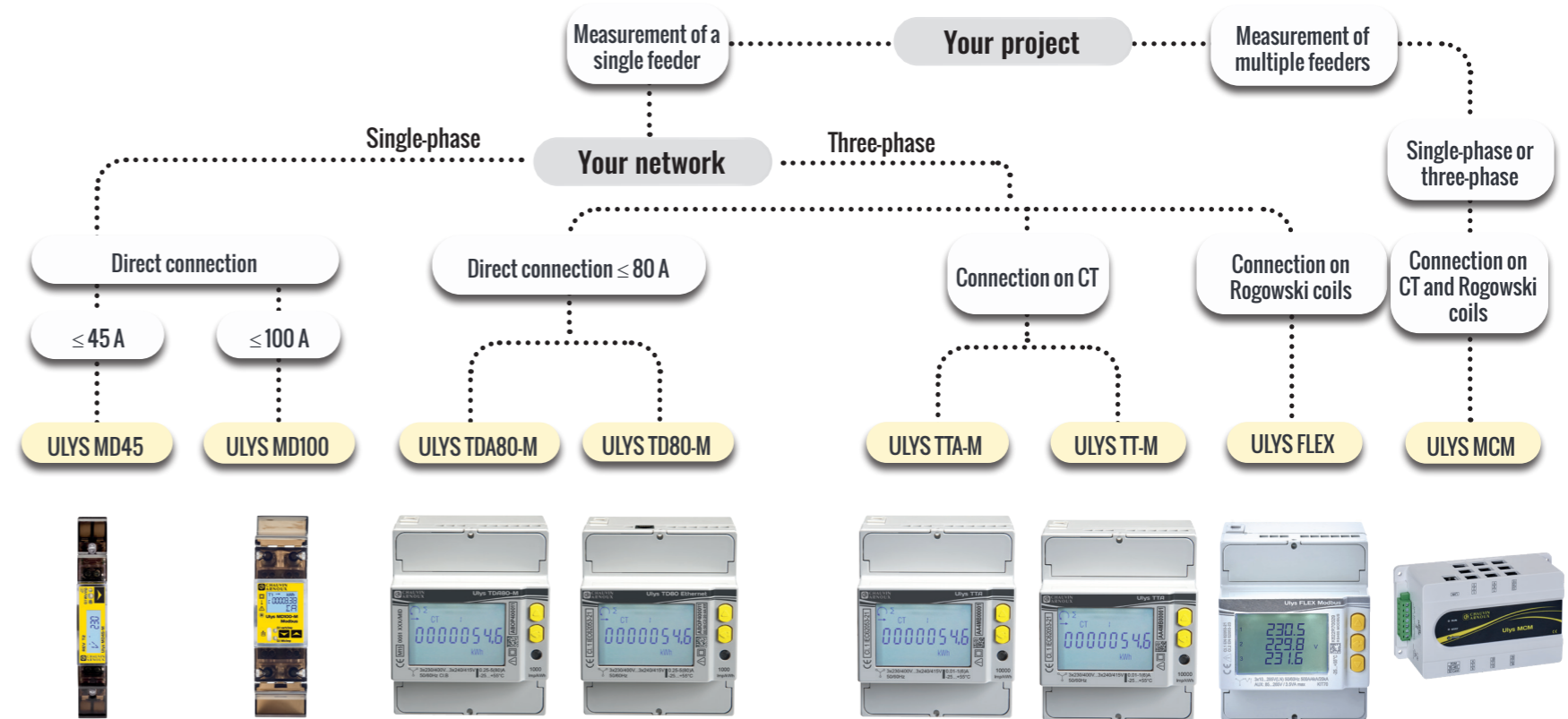
IEC

NON-COMMUNICATING	MEMO MD32 P01330740	MEMO MD65 P01330741	MEMO TD80 P01330745
RS 485 MODBUS	-	-	-
Ethernet Modbus/TCP	-	-	-

ULYS RANGE

HIGH-PERFORMANCE CONNECTED METERING PLAN

- Interoperability**
Integrated communication (Modbus, Ethernet) and pulse outputs in a compact casing
- MID Fair rebilling**
MID, double tariff, partial metering
- Customizable multi-measurement**
Configurable display. Local or remote access, via web pages or push FTP
- Easy implementation**
Wide range of sensors for current measurement



MID

MID

MID

MID

MID

MID

IEC

IEC

ULYS MD45-M P01330754	ULYS MD100-M P01330760	ULYS TDA80-M P01331018	-	ULYS TTA-M P01331019	-	-	-
ULYS MD45-M Modbus P01330756	ULYS MD100-M Modbus P01330761	-	ULYS TD80-M Modbus P01331036	-	ULYS TT-M Modbus P01331037	ULYS FLEX Modbus P01331046 to P01331049	ULYS MCM 9 feeders P01331062
-	-	-	ULYS TD80-M Ethernet P01331040	-	ULYS TT-M Ethernet P01331041	-	ULYS MCM 18 feeders P01331064 See dedicated documentation